

# Layher Info

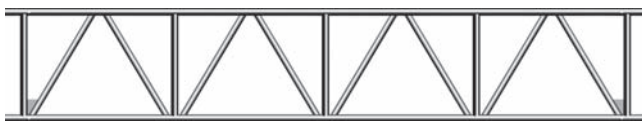
**Technology  
and Products**

## Aluminium Beams. Genuine Layher product.

**Compatible with all types of scaffolding  
High load bearing, light weight**



Aluminium Beam 450, 0.45m high 4.00m long



Aluminium Beam 750, 0.75m high 4.25m long

### Aluminium Beam 450

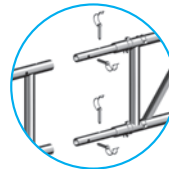
Ref. No.	Length m	Weight kg
4902.200	2.00	8.5
4902.300	3.00	13.5
4902.400	4.00	17.1
4902.500	5.00	21.0
4902.600	6.00	24.9
4902.800	8.00	32.7

### Aluminium Beam 750

Ref. No.	Length m	Weight kg
4903.225	2.25	14.0
4903.325	3.25	19.5
4903.425	4.25	26.0
4903.525	5.25	32.1
4903.625	6.25	38.1
4903.725	7.25	44.2



### Extending beams using spigots



Extending beams using spigots secured with hinged pins

### Connecting beams using couplers



Connecting aluminium beams 450 or 750 with couplers

All dimensions and weights are for guidance only  
Subject to technical modifications.

Sales exclusively on the basis of our currently valid general terms of business.



Available in lengths up to 8m – for longer spans beams can be joined with spigots secured with hinged pins, lattice bolts with locking pins or special bolts with nuts.

Hinged pin (4905.555)



Lattice bolt (4905.065)  
Locking pin (4905.000)



Special bolt and nut (4905.060)



Spigot (4922.000)

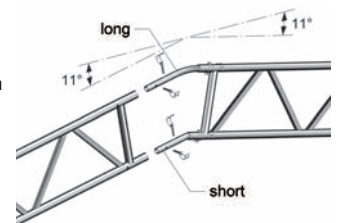


### Double-pitched roof construction

Curved spigots (4922.001 and 4922.002) are also available for double-pitched roof construction for 450 beams giving a roof pitch of 11°.

#### Curved Spigot

Short 4922.002  
Long 4922.001



For 750 beams use (5938.004)

### Permissible torques and lateral forces

	Ali. Beam 450	Ali. Beam 750
Permissible lateral force	≤ 9.0 kN	≤ 14.4 kN
Permiss. bending torque with upper chord braces in 1 m spacing	≤ 13.2 kNm	≤ 24.5 kNm
Permiss. bending torque with upper chord braces in 2 m spacing	≤ 6.2 kNm	≤ 12.0 kNm

In particular configurations Layher aluminium beams are capable of considerably higher loadings. Contact us for further information.